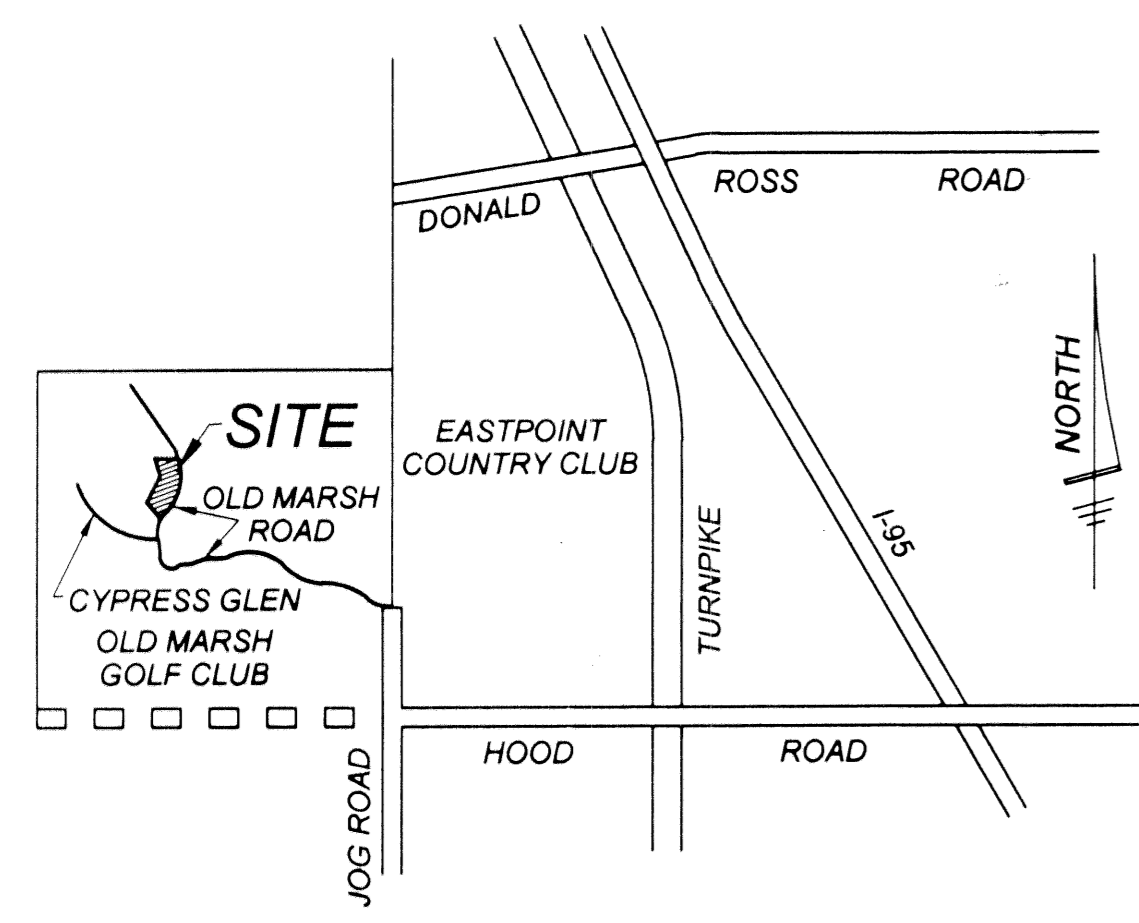


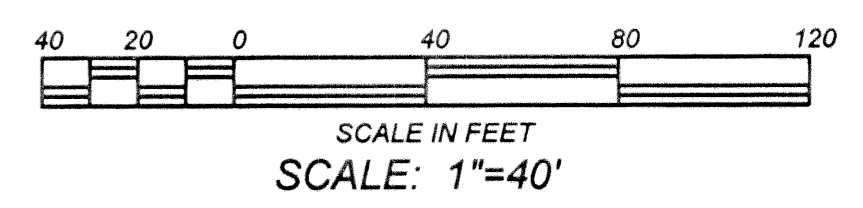
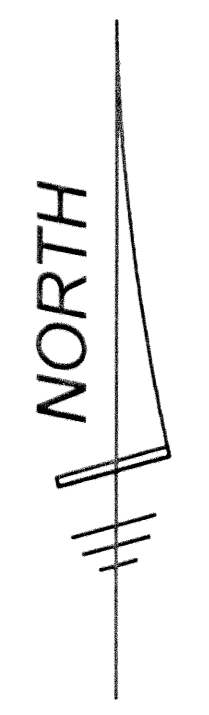
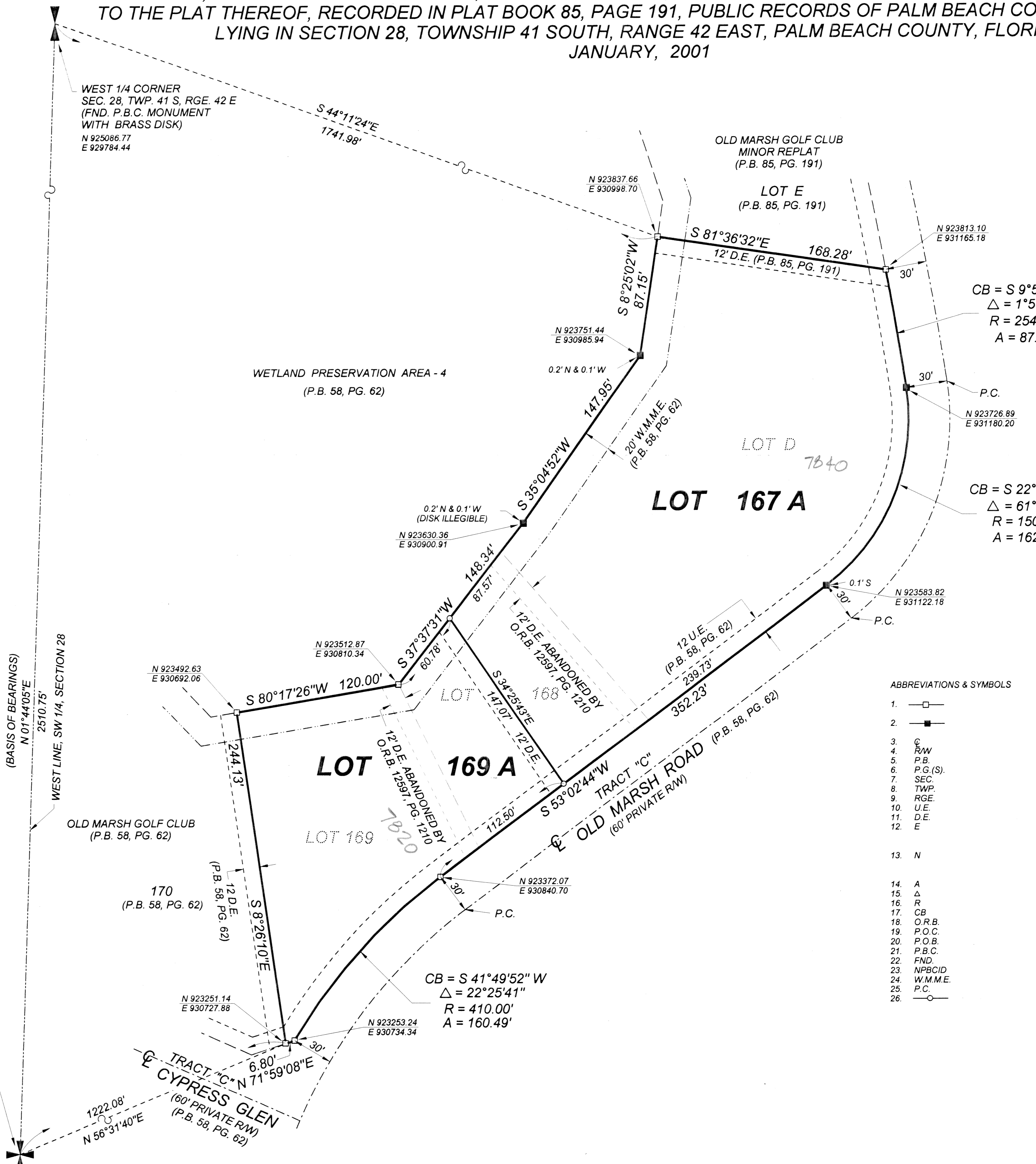
# OLD MARSH GOLF CLUB REPLAT No. 12 (a P.U.D.)

BEING A REPLAT OF LOTS 168 & 169, OLD MARSH GOLF CLUB (a P.U.D.), ACCORDING TO THE PLAT THEREOF, RECORDED IN PLAT BOOK 58, PAGE 62 AND LOT D, OLD MARSH GOLF CLUB MINOR REPLAT, ACCORDING TO THE PLAT THEREOF, RECORDED IN PLAT BOOK 85, PAGE 191, PUBLIC RECORDS OF PALM BEACH COUNTY, FLORIDA, LYING IN SECTION 28, TOWNSHIP 41 SOUTH, RANGE 42 EAST, PALM BEACH COUNTY, FLORIDA  
 JANUARY, 2001



VICINITY SKETCH  
(NOT TO SCALE)

**BEARING ROTATION EQUATION:**  
 N 01°44'05"E (PLAT BEARING)  
 N 01°44'03"E (GRID BEARING)  
 00°00'02" = COUNTER CLOCKWISE BEARING ROTATION (PLAT TO GRID)



ABBREVIATIONS & SYMBOLS

1. □	=	Denotes set 4" x 4" Concrete Permanent Reference Monuments (P.R.M.'s), Stamped P.R.M. P.L.S. # 3357.
2. ■	=	Denotes found 4" x 4" Concrete Permanent Reference Monuments (P.R.M.'s), Stamped P.R.M. P.L.S. #2608.
3. C	=	Centerline.
4. RW	=	Right of Way
5. P.B.	=	Plat Book.
6. P.G.(S).	=	Pages.
7. SEC.	=	Section.
8. TWP.	=	Township.
9. RGE.	=	Range.
10. U.E.	=	Utility Easement.
11. D.E.	=	Drainage Easement.
12. E	=	"E coordinate", states the given position of a point (expressed in feet and decimals of a foot) in an East and West direction.
13. N	=	"N coordinate", states the given position of a point (expressed in feet and decimals of a foot) in a North and South direction.
14. A	=	Arc Length.
15. Δ	=	Central Angle.
16. R	=	Radius.
17. CB	=	Chord Bearing.
18. O.R.B.	=	Official Record Book.
19. P.O.C.	=	Point of Commencement.
20. P.O.B.	=	Point of Beginning.
21. P.B.C.	=	Palm Beach County.
22. FND.	=	Found.
23. NPBCID	=	Northern Palm Beach County Improvement District
24. W.M.M.E.	=	Water Management Maintenance Easement
25. P.C.	=	Point of Curvature
26. ○	=	Set 5/8" Steel Rod and Plastic Cap, Stamped "WALLACE, LB 4569"

OLD MARSH GOLF CLUB  
 REPLAT No. 12 (a P.U.D.)



FIELD:	JOB No.: 94-1111 "F"	F.B.:	PG.:
OFFICE: R.C.	DATE: JAN., 2001	DWG. No.:	94-1111-2
C'K'D:	REF: 94-1111P.2AK 99-1201.2AK	SHEET	2 OF 2

SUBDIVISION OLD MARSH GOLF CLUB  
 PAGE 2  
 FLOOD MAP # 115B  
 ZONING RE  
 LEAD # 42  
 SR 95-42(A)  
 FILE # 797  
 PUD NAME

SW CORNER, SEC. 28,  
 TWP. 41 S, RGE. 42 E  
 (FND. P.B.C. MONUMENT  
 WITH BRASS DISK)  
 N 922577.10  
 E 929708.46